

# ♥ ALMOST HOME ♥

cat rescue

## COMMUNITY RESOURCE GUIDE

HELPFUL INFORMATION  
*and* SERVICE PROVIDERS



VETS



PET SUPPLIES



COMMUNITY  
PANTRY



PET SITTING  
CARE SERVICES



GROOMERS



COMMUNITY CAT  
RESOURCES

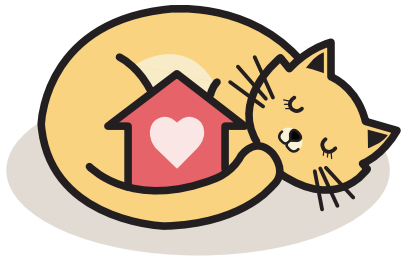


RESCUE  
PARTNERS



TIPS TO FIND  
A LOST CAT

Almost Home Cat Rescue MKE is a registered 501(c)(3) non-profit organization.  
It is our mission to be a safe haven for all cats in our care until their forever home is found.



# ALMOST HOME

cat rescue



## VETERINARY RESOURCES



West Allis  
Vet Clinic

**Dr. G.S. Grewal**

11504 W. Greenfield Ave.  
West Allis, WI 53214  
(414) 453-4344  
<https://www.westallisvetclinic.com/#>



**Glendale**

2100 West Silver Spring Dr.  
Glendale, WI 53209  
(414) 540-6710

**Oak Creek**

400 W Ryan Rd.  
Oak Creek, WI 53154  
(414) 761-6333



**WHS Spay/Neuter Clinic**

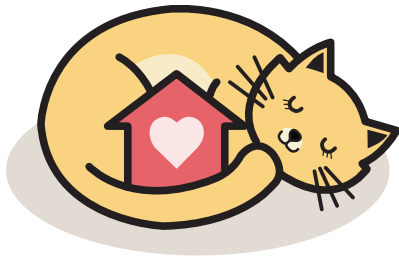
9400 W. Lincoln Ave  
West Allis, WI 53227  
(414) 323-6163  
<https://www.wihumane.org/clinic>



**Mayfair Animal Hospital & ER**

11637 W. North Ave.  
Wauwatosa, WI 53226  
(414) 897-8840  
<https://mayfairanimalemergency.com/>

Almost Home Cat Rescue MKE is a registered 501(c)(3) non-profit organization.  
It is our mission to be a safe haven for all cats in our care until their forever home is found.



# ♥ ALMOST HOME ♥

cat rescue



## RESCUE PARTNERS

Almost Home Cat Rescue MKE partners with shelters and rescues both locally and across the country to pool talent and resources to save more kitties!

We are continually looking for additional partners to create a strong animal support network in our community that aligns to our vision to be a resource for the community, its cats, and the people who love them. Please support these partners to help us on our journey to save as many animals and people as possible!



### **Urban Cat Coalition**

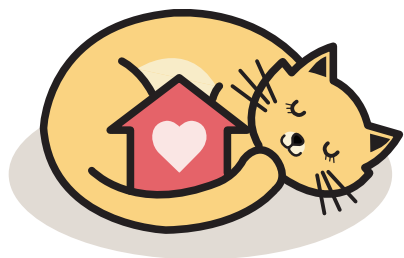
PO Box 270651  
Milwaukee, WI 53227  
info@urbancats.org  
<https://www.urbancats.org>



### **CHAINED DOG RESCUE MKE**

Founder and Director, Katrina Rasler  
414-712-9551  
<https://www.facebook.com/ChainedDogs/about>

Almost Home Cat Rescue MKE is a registered 501(c)(3) non-profit organization. It is our mission to be a safe haven for all cats in our care until their forever home is found.



# ALMOST HOME

cat rescue



## PET SUPPLIES



### **SKILOS Family Pet Store**

(414) 207-2751

2328 N Farwell Ave, Milwaukee, WI 53211

<https://www.skilospets.com>



### **Pet Supplies Plus - Glendale**

5300 N Port Washington Rd, Glendale, WI 53217

(414) 964-7255

### **Pet Supplies Plus - Greenfield**

4505 S 76th St, Greenfield, WI 53220

(414) 545-9790

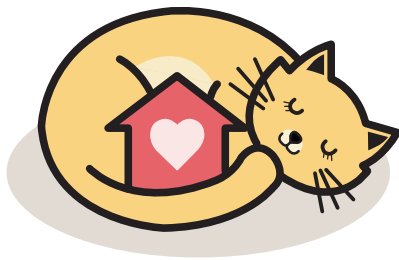
### **Pet Supplies Plus - Brookfield**

18610 W Bluemound Rd, Brookfield, WI

(262) 827-9095

<https://www.petsuppliesplus.com>

Almost Home Cat Rescue MKE is a registered 501(c)(3) non-profit organization.  
It is our mission to be a safe haven for all cats in our care until their forever home is found.



# ALMOST HOME

cat rescue



## COMMUNITY PANTRY

### **Need help to get through a crisis, unexpected event, or a tough time?**

Almost Home Cat Rescue is committed to helping our community and animals by offering access to our Community Pantry. We stock our pantry with different items that rotate with the donations we receive that are free to take.

Typically we place food, litter, bowls, treats, toys, litter boxes and carriers in our pantry but we can't guarantee what is available since we collect our items from our generous donors. Anyone in need can come to collect any of these items you may need during our open house hours.

The Community Pantry has different supplies every day, so please stop in if you're in need to see if we can support you and your fur babies during a difficult time.



### **ALMOST HOME CAT RESCUE**

COMMUNITY PANTRY

Donations for families in need

925 E Ogden Ave, Milwaukee, WI 53202

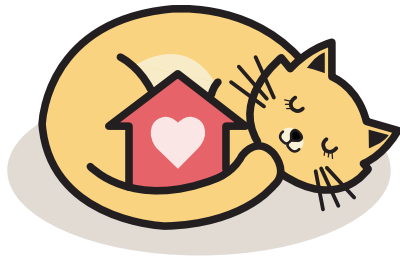
#### HOURS:

Tuesdays & Thursdays 6pm - 8pm

Saturdays & Sundays 10am - 2pm

Almost Home Cat Rescue MKE is a registered 501(c)(3) non-profit organization.

It is our mission to be a safe haven for all cats in our care until their forever home is found.



# ♥ ALMOST HOME ♥

cat rescue



## PET CARE SERVICES



### **FETCH! Pet Care**

Pet Sitting, Dog Walking &  
Overnight Pet Care  
(414) 246-4547  
gmke@fetchpetcare.com  
<https://www.fetchpetcare.com>



### **KRISTIN SIMONS**

(414) 755-9244  
Kristinsimons219@gmail.com



## GROOMING SERVICES

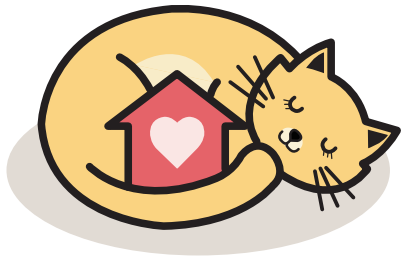
# EmBARK!

*Pet Spa*

### **EmBARK! Pet Spa**

1208 E Oklahoma Ave  
Milwaukee WI 53207  
(414) 747-8830  
embarkpetspa@att.net  
<http://www.embarkpetspa.com>

Almost Home Cat Rescue MKE is a registered 501(c)(3) non-profit organization.  
It is our mission to be a safe haven for all cats in our care until their forever home is found.



# ALMOST HOME

cat rescue



## TNRM RESOURCES

As a rescue organization, Almost Home Cat Rescue supports TNRM, or Trap-Neuter-Return-Monitor. It is a similar process to TNR with one key difference. When the cats are returned outside, they do so with a caretaker who feeds, monitors, and gets them access to veterinary care for any health issues that may arise. Not only is spaying and neutering community cats extremely helpful in keeping the cat population low, but it also reduces the number of kittens born outdoors. Community cats are more at risk for contracting diseases and becoming ill, fighting with other cats and becoming injured, and they risk death from being hunted by predators. TNRM has been proven to help community kitties live longer and healthier lives. When community cats are supported with access to fresh water, food, and shelter, they do not have to guard resources or scour larger territories looking for their basic needs. Access to veterinary care gives them help when they are injured or fall ill.

### Need Help for a Community Cat in the Milwaukee Area?

While Almost Home does not have a dedicated TNRM program, we are always here to help. If you need help humanely trapping a community cat, here are rescue organizations you can contact:



#### **HAWS (Humane Animal Welfare Society)**

Waukesha, WI: <https://hawspets.org/project-guardian/>



#### **Washington County Humane Society**

Slinger, WI: <https://www.wchspets.org/tnr-program/>



#### **Wisconsin Humane Society Ozaukee**

Saukville, WI: <https://www.wihumane.org/services/tnr>

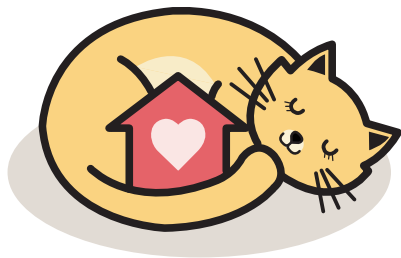


#### **Wisconsin Community Veterinary Center**

Madison, WI: <https://www.wicvc.org/about-6>

#### **Urban Cat Coalition**

Milwaukee, WI: <https://www.urbancats.org>



# ♥ ALMOST HOME ♥

## cat rescue

## TIPS TO FIND A LOST CAT

### 1 Search Inside and Outside - quadruple check everywhere!



**Check everywhere INDOORS:** cats are masters of hiding and can tuck themselves into extremely small spaces. Check the closets, under and behind washing machines and other appliances, under beds and furniture, cabinets, and really anywhere they could squeeze into an opening. Retrace your steps and try to remember the last time you saw your kitty to check those areas first. Make sure to re-check everywhere, and rattle a favorite toy, or crinkle a bag of treats to show them you have good stuff if they come out of hiding.

**Check the Neighborhood + 2 mile radius:**

Check garages, vehicles, crawlspaces, sheds, under decks and porches, and ask your neighbors to help look. Many times when kitties get out, they run to the first space where they can easily hide. Shake a bag of yummy treats, or clink a spoon on the side of a can or dish to signal tasty food is awaiting them. Kitties will be very scared in unfamiliar territory, so the more things you can do to show them you have good stuff for them, the better the chances they will uncover themselves from their hiding spot. Make sure to take a cat carrier and a flashlight with you to check dark corners and have a way to take your kitty home when you find them.

### 2 Set up stations to attract your kitty back home



**Set up a crate or humane trap with blankets from home, food and water outdoors**  
**STRONG SCENTS are enticing!**

- Smelly tuna or other very attractive food to entice them to come back home.
- Make sure the crate has water and a blanket that smells like them so they come to a scent they recognize. Set up a few close locations – front and back yard, plus a neighbor's garage or yard.
- Also leave a litter box out to also waft their scent out to attract them.
- Crack a window in their favorite room at home so they smell their scent to draw them back
- Set up a trail camera on your stations to monitor activity and send you a motion alert

### 3 Spread the Word!



**Make a LOST CAT flyer and POST POST POST!**

- Make sure it has all your kitty's info, and your info including your phone number!

**Canvas your neighborhood PLUS a 2-mile radius** from where your kitty went missing.

Post printed copies in the neighborhood and leave them at your neighbors' houses. Leave them in coffee shops, supermarkets, vet offices, police stations, and any other public shops.

- **Lost Cats of Wisconsin** have free resources like flyer templates and free listing services <https://www.facebook.com/LostCatsOfWisconsin/>
- **PawBoost** free service gives you a flyer template, FB and Lost Post, and Rescue Squad alert <https://www.pawboost.com/site/how-it-works>
- **PetcoLove** also has a fast free posting service <https://lost.petcolove.org/>
- **Post on Facebook, Instagram, Twitter**, and your local neighborhood **listserv** or email group
- **Craig's List** <https://milwaukee.craigslist.org/search/laf?query=cat>
- **Nextdoor** [https://help.nextdoor.com/s/article/Best-practices-Lost-pets?language=en\\_US](https://help.nextdoor.com/s/article/Best-practices-Lost-pets?language=en_US)
- **Tabby Tracker** <https://www.tabbytracker.com/lost-cats-Wisconsin.php>
- **Contact MADACC** <http://madacc.org/lost-found/> (or the Animal Control Service in your area)
- **Contact WI Humane Society** <https://www.wihumane.org/strays/tips-for-finding-lost-animals->

### 4 Don't give up hope!

Stay focused, keep fresh food and water ready, keep the crate prepped, and keep calling to them so they can hear your voice and come to safety.